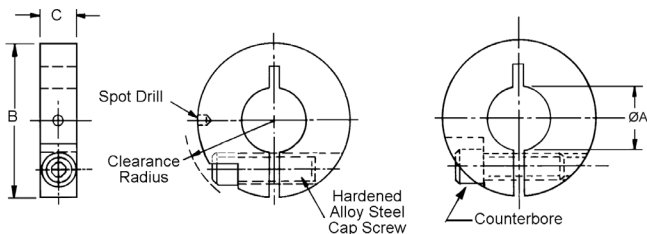


# SPLIT HUB CLAMPS

BORE	TYPE	MATERIAL
<b>.103" TO .562"</b>	<b>COMPACT CLAMP DESIGN</b>	<b>303 STAINLESS STEEL OR ALUMINUM ANODIZED</b>



Note: Some sizes may be full or semi-counterbored or step cut at manufacturer's option.

STAINLESS STEEL STOCK NO.	ANODIZED ALUMINUM STOCK NO.	ØA DIA.	B DIA.	C	CLEAR. RADIUS	CAP SCREW THREAD	SPOT DRILL DIA.	SPLIT HUB INSIDE DIA. (Ref.)
CG1-1	CG1-1-A	.103	1/2	5/32	5/16	#3-48	1/16	-
CG1-2	CG1-2-A	.125	1/2	5/32	5/16	#3-48	1/16	-
CG1-20	CG1-20-A	.125	9/16	5/32	3/8	#2-56	-	-
CG1-21	CG1-21-A	.125	5/8	5/32	3/8	#2-56	-	-
CG1-3	CG1-3-A	.141	1/2	5/32	5/16	#3-48	1/16	-
CG1-22	CG1-22-A	.188	9/16	1/8	3/8	#1-72	-	-
CG1-23	CG1-23-A	.188	9/16	5/32	3/8	#2-56	-	5/64
CG1-4	CG1-24-A	.188	5/8	5/32	11/32	#2-56	-	TO
CG1-5	-	.188	5/8	3/16	3/8	#4-40	1/16	1/8
CG1-25	CG1-25-A	.188	7/8	1/4	33/64	#6-32	-	-
CG1-6	-	.219	5/8	5/32	11/32	#2-56	1/16	-
CG1-26	CG1-26-A	.250	9/16	1/8	3/8	#1-72	-	-
CG1-27	CG1-27-A	.250	9/16	5/32	3/8	#2-56	-	-
CG1-28	CG1-28-A	.250	5/8	5/32	3/8	#2-56	-	5/32
CG1-8	CG1-8-A	.250	7/8	3/16	31/64	#4-40	1/8	& 3/16
CG1-9	CG1-9-A	.250	7/8	1/4	33/64	#6-32	-	-
CG1-10	-	.281	7/8	1/4	33/64	#6-32	1/8	-
CG1-11	-	.312	7/8	3/16	31/64	#4-40	1/8	.2405
CG1-12	CG1-12-A	.312	7/8	1/4	33/64	#6-32	-	& 1/4
CG1-14	CG1-14-A	.375	1-1/8	1/4	21/32	#8-32	3/16	-
CG1-15	CG1-15-A	.375	1-1/4	5/16	11/16	#8-32	-	5/16
CG1-31	-	.375	1-1/4	5/16	5/8	#8-32	-	-
CG1-17	CG1-17-A	.437	1-1/8	1/4	21/32	#8-32	3/16	-
CG1-18	CG1-18-A	.437	1-1/4	5/16	11/16	#8-32	-	3/8
CG1-32	-	.437	1-1/4	5/16	5/8	#8-32	-	-
CG1-19	CG1-19-A	.562	1-1/4	5/16	11/16	#8-32	-	-
CG1-33	-	.562	1-1/4	5/16	5/8	#8-32	-	1/2

Special clamps are available on request.